

Auricula
GarageBand Quick Start Guide.

Help File

Please visit <http://www.AuriculaOnline.com/> for the most up to date information.
Please join the *User Forum* as well, at: <http://forum.AuriculaOnline.com/>.

Thank you for your support.

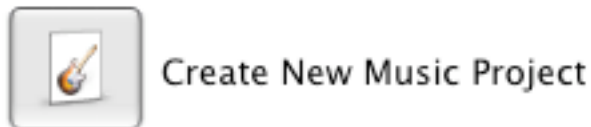
INSTALLATION, DEMO MODE, UNINSTALLING, & AUTHORIZATION

These topics are covered in a separate document available in the 'Downloads' section of the web site, called: *Install_Instructions.pdf*.

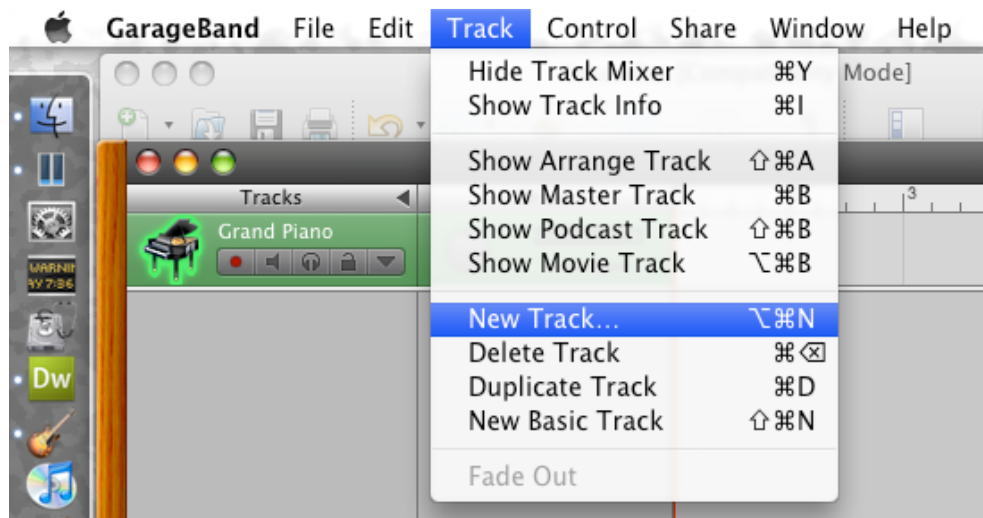
GARAGEBAND QUICKSTART

Launch GarageBand

Choose Create a New Music Project from the startup wizard.



Select New Track... from the Track menu



Select Real Instrument Track...

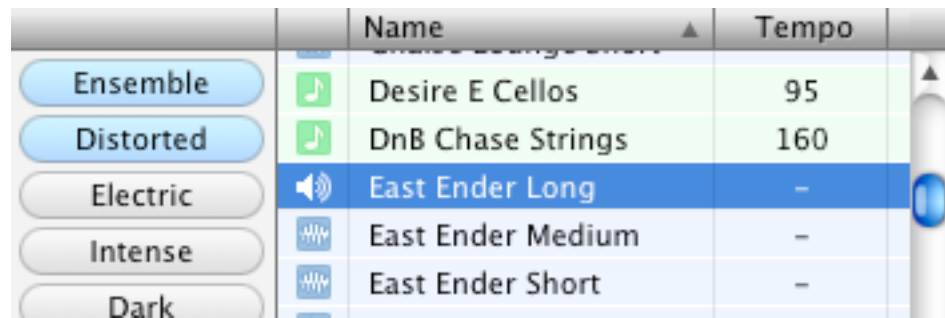


Click the Eye...

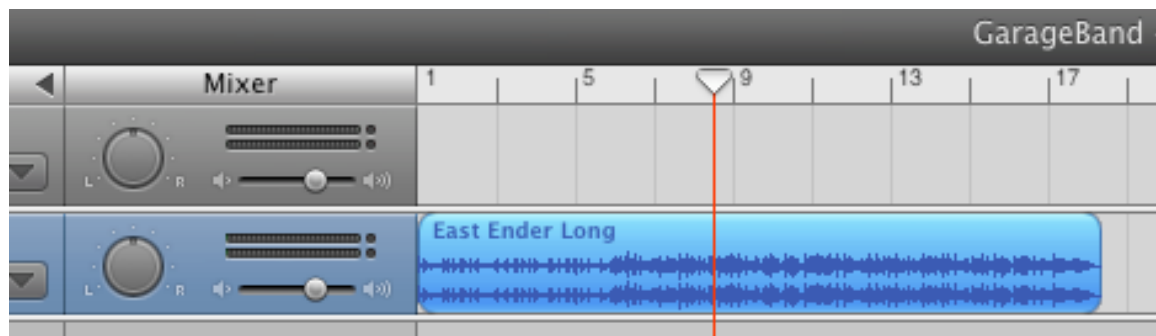


... to bring up the browser.

Select ENSEMBLE.
Select DISTORTED.
Select East Ender Long...



Drag this track onto track 2 and drop it so that it starts at measure 1, beat 1.



Click the I...



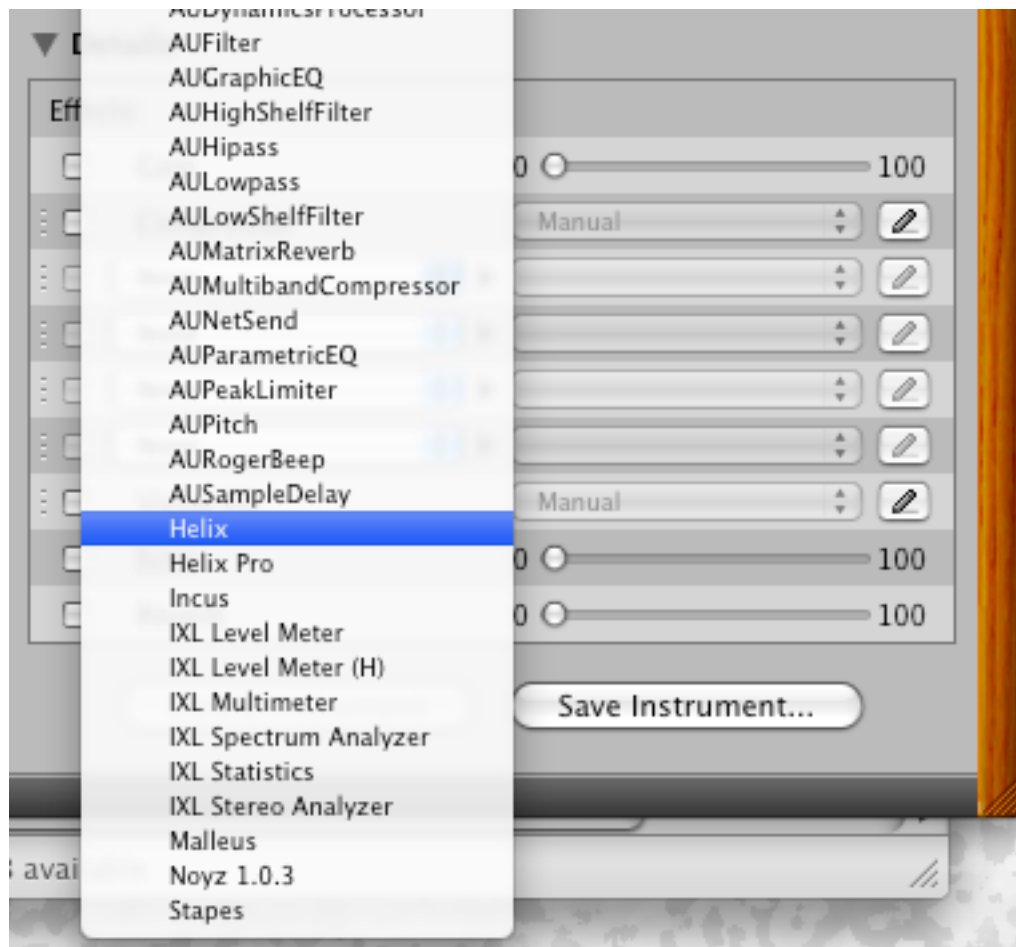
... to reveal the Information pane.

Click the disclosure triangle next to Details...



... to reveal the plug-ins browser.

Select an Auricula plug-in from the popup list.

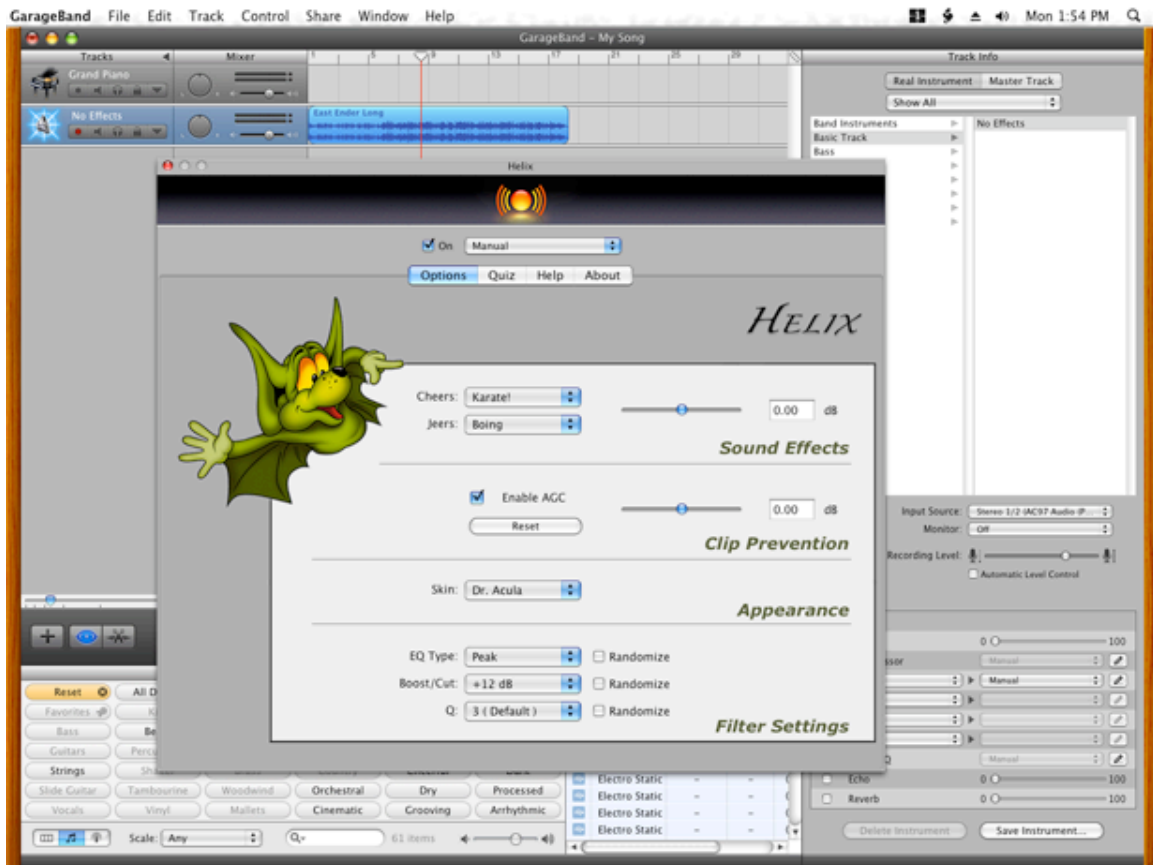


Click the pencil tool...

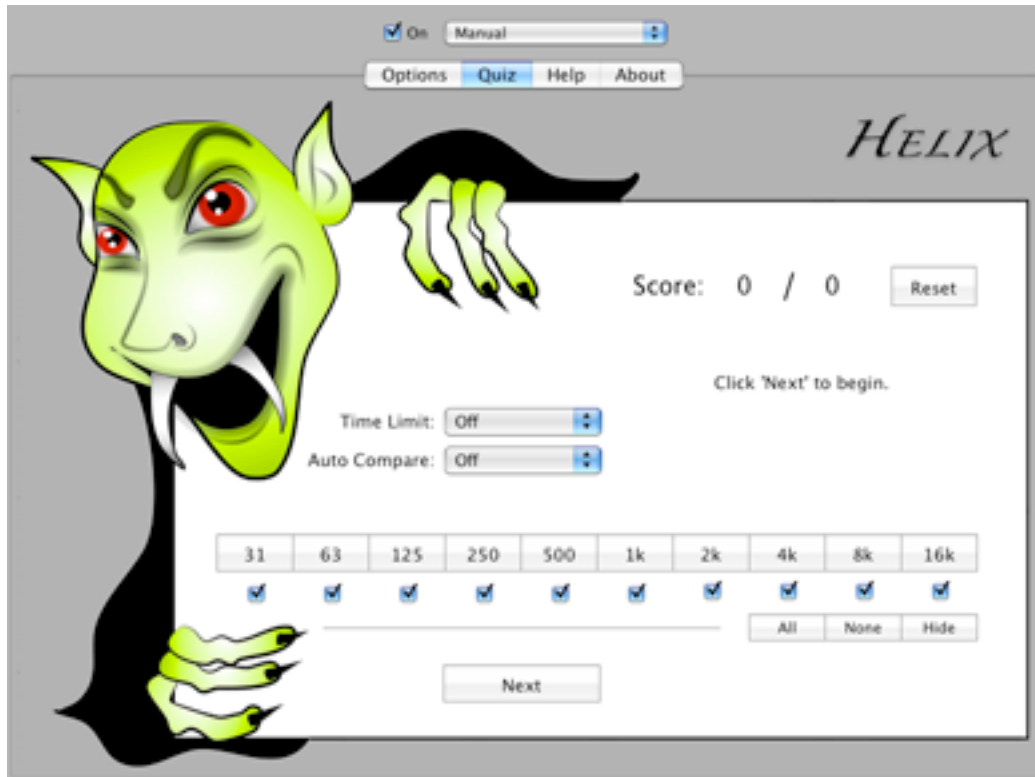


... to bring up the user interface for your plug-in.

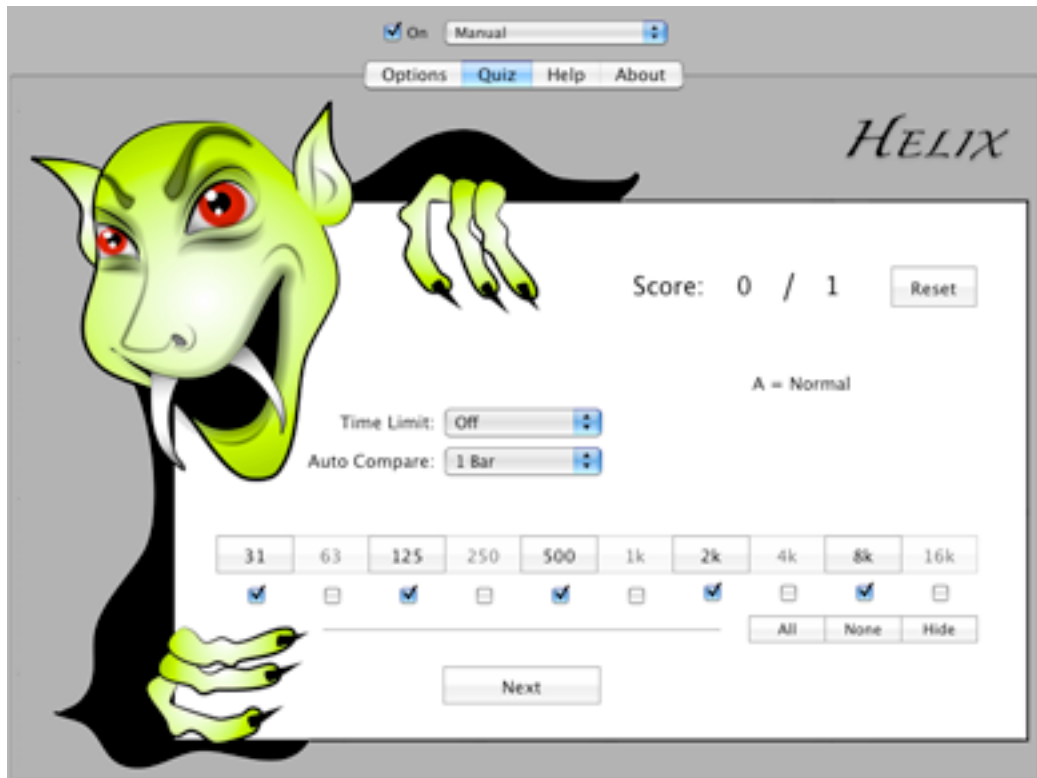
Choose the options you want (or use the defaults).



Click the QUIZ tab.



For beginners, use the settings seen below...
Note the check next to 'On'...



Click the Play button in GarageBand, click the Next button on the plug-in, enjoy!